	<p style="text-align: center;">Health and Wellbeing Board 28 March 2017</p> <p style="text-align: center;">Strategic Director of Children and Young People</p>
For information	Wards Affected: ALL
<p>Update Paper: Brent Children's Trust</p>	

1. Introduction

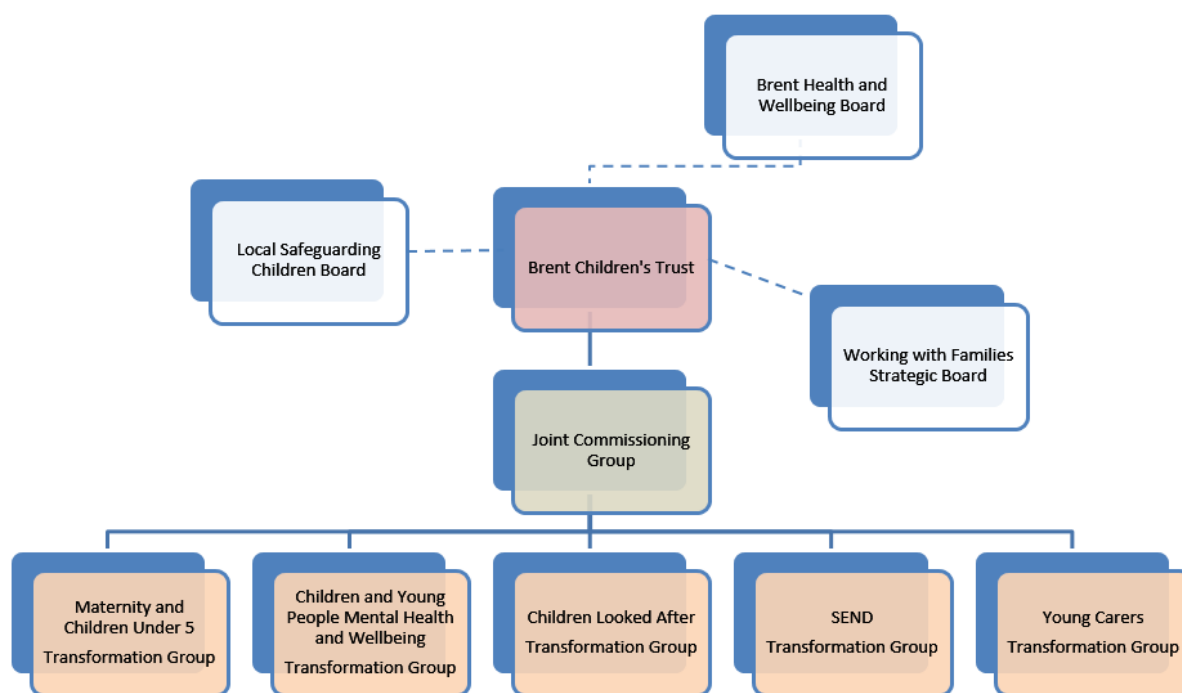
- 1.1. The Brent Children's Trust (BCT) is a strategic body that encompasses a local partnership of key partners. The primary functions of the BCT relate to collaborative working, commissioning and joint planning, in ensuring that resources are allocated and utilised to deliver the maximum benefits for local children and young people.
- 1.2. The BCT has a strong relationship with the Brent Health and Wellbeing Board and Local Safeguarding Children Board. Through the Children's Joint Commissioning Group (JCG), the BCT is linked to five transformation groups tasked with taking forward specific priorities at a more operational level. This structure is outlined in the diagram at 3.1.
- 1.3. The BCT provides the Brent Health and Wellbeing Board with an update paper every six months, with the previous report being at the October 2016 meeting. This paper provides a broad summary of the BCT work programme and actions of the JCG from October 2016 to March 2017.

2. Recommendations

- 2.1. The Health and Wellbeing Board is asked to:
 - Note the work of the Children's Trust from October 2016 – March 2017.

3. Structure

- 3.1 The diagram below provides an overview of the governance structure of the BCT, JCG and five Transformation Groups.



- 3.2 The Working with Families Strategic Board has recently been included within this structure as it now provides the BCT with an update report every six months. Details of the first report submitted under these new arrangements are included below.

4. BCT Work Programme

- 4.1 A 2016/17 BCT work programme was agreed in March 2016. BCT meetings are held on alternate months to progress the work programme, which remains flexible throughout the year to ensure oversight of and address challenges in the children and young people's landscape. All BCT agendas also include standing items to receive feedback from and provide steer to the JCG. A summary of the work of the JCG and its sub-groups is provided from 5.1.
- 4.2 Since October 2016 the BCT work programme has covered the following areas:

CAMHS and CCG commissioning intentions (linked with STP)

- The BCT continues to be a key forum to share, discuss and inform CCG commissioning intentions; providing support for relevant consultations and linking to the CCG led CYP Mental Health and Wellbeing Transformation Plan.
- The BCT remains sighted on the North West London STP (the driving force for commissioning across health and social care) in relation to Children - noting its strongest links to Mental Health as well as other areas including Prevention, Long-term Conditions and STP Delivery Area 5 (focussing on Central Middlesex Hospital, paediatrics and maternity), and cascading this through BCT networks.

- The BCT have tasked members to link with the Transforming Care Partnership Board to inform collaboration in developing services for individuals with learning disabilities, autism and/or mental health conditions.
- A strategic discussion on Children's Mental Health and Wellbeing has helped to promote understanding of CAMHS at a Scrutiny level and shape the topic of a forthcoming task and finish group to ensure greatest impact.
- The BCT have maintained oversight of the Anna Freud *Children and young people's mental health and well-being system review* (CYP Mental Health and Wellbeing Transformation Plan Priority 1) - completed October 2016 - and are collaborating in the development of its delivery plan via the JCG and sub-groups.

National Childhood Obesity Plan

- The BCT has considered the implications of the Government's Childhood Obesity Action Plan. The BCT has promoted training for health and early years professionals funded by Health Education England North West London (HEE NWL). Public health have launched the Daily Mile to Brent primary schools.
- The BCT welcomed the Council's new planning policy restricting new fast food outlets opening near schools.
- Brent Children's Centres and health visiting service have achieved level 1 UNICEF Baby Friendly Accreditation. (The maternity service at Northwick Park has level 3 accreditation).

Local area OFSTED SEND inspection planning

- In preparation for an anticipated SEND inspection the BCT have continued to oversee and provide steer to activities including:
 - Ongoing development of Self Evaluation Form (SEF) documents and stakeholder map;
 - Delivery of a successful SEND workshop (29/09/16), resulting in refreshed SEF;
 - Briefing notes circulated to all potential attendees of SEND inspection meetings;
 - Evidencing impact of improvements; and
 - Development of clear rationales for areas to improve.

Collaborative working and information sharing

- The BCT has continued to work collaboratively with other strategic Boards, including the Brent LSCB, as well as key partners such as Healthwatch Brent.
- The LSCB Annual report and Section 11 audit were presented at consecutive BCT meetings, providing opportunities to progress shared priorities and areas for joint working.
- The development of the LSCB Dashboard has been advanced with a clearer understanding of what data should be included and, crucially, what is missing. The goal of this work is to build a model that accurately illustrates what a range of data means for children in Brent.
- Healthwatch Brent presented the BCT with two reports titled 'A mental health needs assessment of young Irish travellers at Lynton Close Brent' and 'Young People's Perception, Awareness and Use of Mental Health Services'. The first was an example of work completed following award of a Healthwatch

Community Chest large grant; which are awarded to provide clear evidence to support good practice or the needs of a service group. BCT members have discussed the findings of both reports with Healthwatch representatives and are identifying and progressing links in their individual areas. Upcoming Healthwatch reports with close links to children and young people are being scheduled for future BCT meetings.

Looked After Children (LAC) Demand Management Project

- The BCT has supported a Brent Council led review of the LAC system in Brent.

Several BCT members have provided input and insight for the review through semi-structured partner interviews.

- The BCT has assisted in the development of the review's online partner survey and, through its network, has promoted responses from various services and professionals that refer into the MASH.
- The review confirmed the strong position from which to build and make improvements. The final report was discussed at the BCT meeting in March, where partnership actions to support next steps were also agreed.

Working with Families (Troubled Families Programme)

- The BCT has established closer links and governance with Working with Families (WWF) Brent partnership work and now receives update papers from the WWF Board every six months to oversee delivery of the five year programme in Brent.
- Progress is being monitored against challenging targets of 1,609 families identified to be worked with over the next three years.
- The BCT have remained sighted on the additional Troubled Families Phase 2 desired outcomes and ensured alignment of the whole family approach (which attempts to ensure clients access the right service at the right time) with the Brent 2020 vision.
- Further opportunities to link this work to the STP, in particular Delivery Area 1C (Helping children to get the best start in life), are being considered.

CYP Participation Strategy Impact Monitoring

- The BCT continues to provide strategic input to ensure the successful roll-out of the CYP Participation Strategy following its launch in autumn 2016.
- In supporting co-design and co-production of services the BCT has helped to link the Young Advisors strand of the strategy with areas including Youth Services and CAMHS, which will enable children and young people to shape the future delivery of these services.
- The BCT is progressing opportunities to access CAMHS transformation funds for joint work in this area.
- The BCT is working to ensure that a key aim of the strategy – that all future strategies go through and receive feedback from young people before sign-off – is achieved before 2019 through raised awareness and increased capacity.

Young Carers

- Young Carers remain a priority area for the BCT as it provides direction for Brent's ongoing awareness raising campaign, which has included input from young carers in the design and selection of publicity and has increased its engagement activities to reach a wider range of stakeholders.
- The Young Carers Transformation Group is developing metrics to monitor the impact of awareness raising in increasing the number of registered young carers in Brent.
- In January 2017 there were 316 young carers registered at the Brent Carers Centre. Updates on these figures and related data will be included in future Children's Trust to Health and Wellbeing Board update papers.

4.3 The initial 2017 – 2018 BCT work programme was drafted at the March 2017 BCT meeting. Items agreed include the following:

- CAMHS monitoring data;
- Transitions to Adulthood strategic discussion;
- Joint Targeted Area Inspection (JTAI) 'neglect' theme; and
- Annual exclusions report for Brent Schools.

Updates on these items will be included in future BCT to Health and Wellbeing Board papers.

5. Children's Joint Commissioning Group and Transformation Groups

5.1 As a standing item the BCT receives updates from and provides a steer to the Children's JCG; which meets every two months to progress the Joint Commissioning Framework and consists of the Chairs of the five Transformation Groups, Brent CCG Children's Commissioner, Brent Council Children's Commissioner, and other key stakeholders.

5.2 Since October 2016 the JCG has devoted significant time to reviewing the findings of the Anna Freud *Children and young people's mental health and well-being system review* report, helping to decide and prioritise which recommendations to progress. The JCG is now informing the ongoing development of its delivery plan with a key focus on recommendations around integration and colocation, which will include accessing funding for a single integrated workforce approach for training. Additional work in developing ideas for what the right team, training programme and multi-agency model for increased cohesiveness and connectivity looks like has been completed and fed into CAMHS Transformation Delivery Workshop 1 on 02 February 2017. A core component of CAMHS transformation – the Front Door – may be implemented as early as 17/18.

5.3 The JCG has been developing the JSNA as a forward-looking, live document for use by all Transformation groups and is in the process of collating data from a range of other sources, including CCG monitoring data and datasets from the Anna Freud Needs Assessment, for best use in informing service planning across all priority areas. The last eight months of CCG performance dashboards

have been analysed and driven discussions around improvements for services for eating disorders and LAC and the location/accessibility of CAMHS services. More comprehensive/granular CCG data has subsequently been developed which was used at the CAMHS Transformation Delivery Workshop – the latest iteration of this data is scheduled for analysis at the next JCG meeting.

- 5.4 These datasets have been used in conjunction with planning tools developed by each Transformation Group and collated by the JCG and have identified Speech and Language Therapy services as a key area for joint service delivery. Work around understanding the risks, unique attributes and areas of alignment of existing, separate contracts across the LA and CCG for Speech and Language is progressing and will inform joint commissioning decisions in this area when current contracts expire.
- 5.5 The BCT agreed a preferred service model for children's public health services. The Council, with the support of the CCG, has completed the procurement of a new 0-19 years service incorporating tier 2 weight management services and targeted support for vulnerable families through the Maternal Early Childhood Sustained Home-Visiting (MESCH) model.

Contact Officer:

Jon Cartwright
Senior Policy Officer
02089371742
Jon.Cartwright@brent.gov.uk
Brent Council